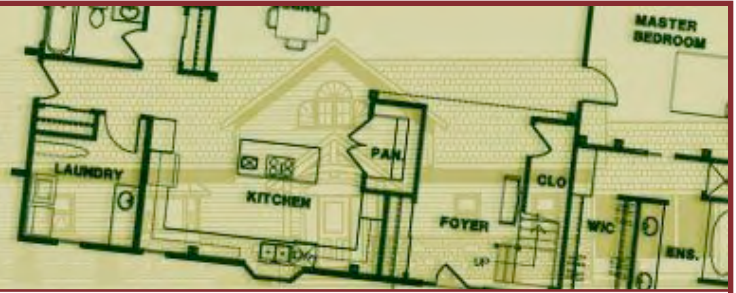




THE TRILLIUM COLLECTION
Thistlewood Timber Frame Homes



Plan Number: MPL-01-2006

Maplegrove

This home exemplifies all the characteristics of gracious retirement living. The version of the house as shown has definite French-Canadian design influences including the use of stone and wood on the exterior, steep roof pitches with narrow dormers and a special use of heritage red on the recessed entry doors.

Inside, the open great room with cathedral ceiling was designed for entertaining. The granite fieldstone fireplace complements the natural patina of the Douglas Fir timbers. The sunroom, kitchen, master bedroom and a home office complete the main floor layout. Keeping all main rooms on one level was an important design consideration for a retirement home. Upstairs are three extra bedrooms and there is also a large loft which is perfect for an artist's studio, library or craft room.



Front view.

The exterior finish chosen was local hand-laid stone to the eaves, with board & batten on the dormers and the garage. The entrance is recessed and well-sheltered, providing a warm welcome to guests.

Photos show an example home 'as built' and may not correspond to the standard floor plan.
All photos and designs copyright 2005 by Thistlewood Timber Frame Homes.

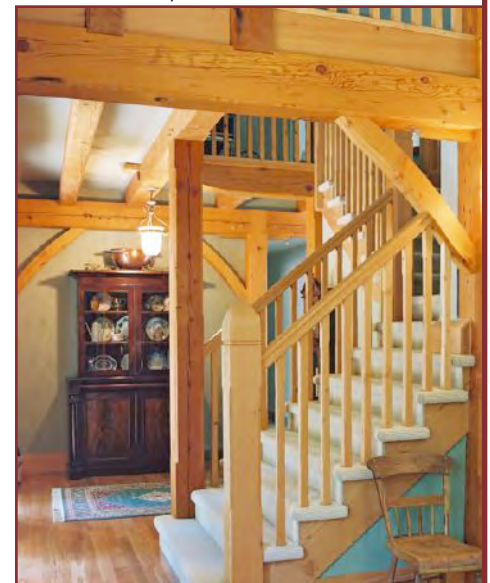
Great Room



Sunroom



Entrance Foyer & Stairs





Dining area

Maplegrove

3000 sq. ft.

PRICING:

timber frame \$57,925
 main frame and sunroom trusses
 in US Dollars FOB our factory, Douglas Fir
 (all frame prices are subject to change without notice)

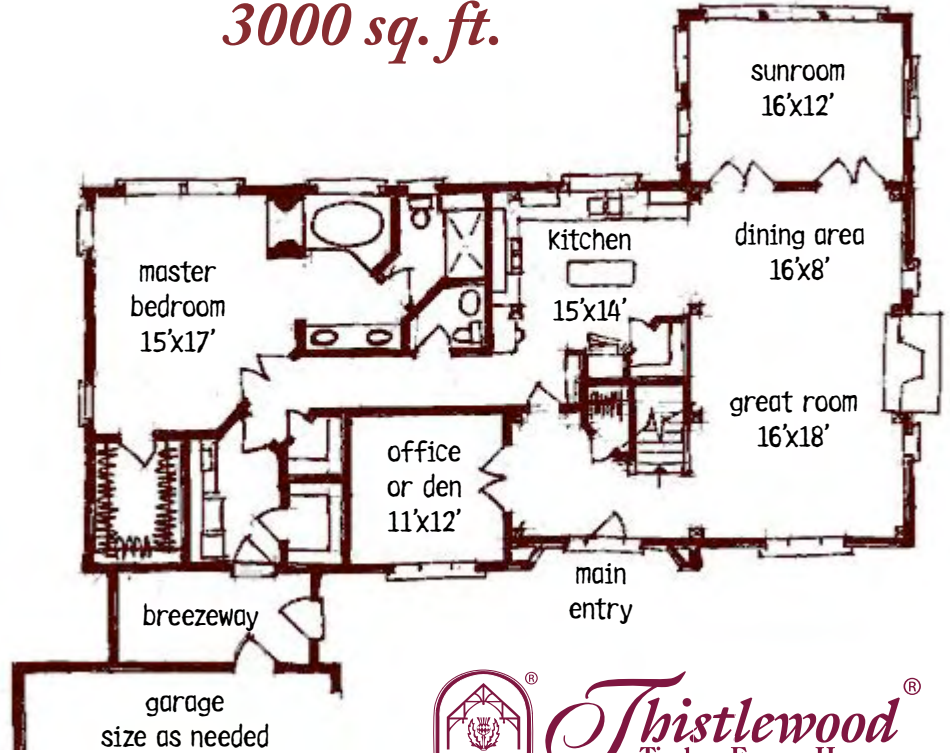
SIPS panels \$37,000
 all exterior walls enclosing conditioned space,
 plus roof panels over timber-vaulted areas
 (all SIPS prices are estimates and must be re-priced
 for your construction location)

GENERAL SPECIFICATIONS:

hybrid design
 two stories with loft
 4 bedrooms, 2.5 bathrooms
 3-bent main structure
 garage connected with breezeway,
 angled to house

DIMENSIONS OF HOUSE:

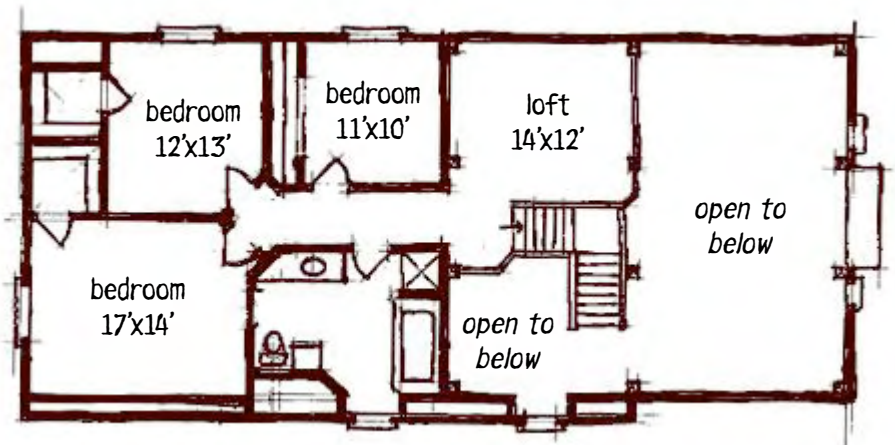
61 ft x 40 ft, 3000 sq ft conditioned space
 master bedroom — 15 ft x 17 ft
 great room — 16 ft x 18 ft
 dining area — 16 ft x 8 ft
 kitchen — 15 ft x 14 ft
 sunroom — 16 ft x 12 ft
 office/den 11 ft x 12 ft
 2nd floor bedroom — 17 ft x 14 ft
 2nd floor bedroom — 12 ft x 13 ft
 2nd floor bedroom — 11 ft x 10 ft
 2nd floor loft — 14 ft x 12 ft
 (all dimensions rounded off and approximate)



Main Floor



Second Floor



Photos show an example home 'as built' and may not correspond to the standard floor plan.
 All photos and designs copyright 2005 by Thistlewood Timber Frame Homes.

Copyright 2005 Thistlewood Timber Frame Homes. All rights reserved. May not be reproduced without permission.

(800) 567-3280

www.thistlewoodtimberframe.com