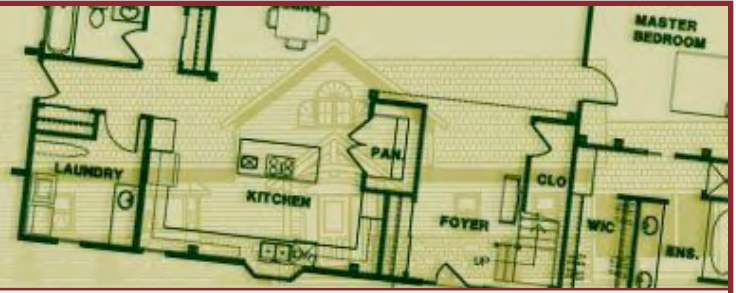




THE TRILLIUM COLLECTION
Thistlewood Timber Frame Homes



Plan Number: SSS-01-2006

Single Story Splendor

This attractive single story home tastefully blends timber frame and conventional construction in a comfortable and spacious layout.

The timber frame components are seen in the great room and master bedroom. The most notable features of this design are the hammerbeam bents which form an eye-catching focal point in the great room. This design allows for versatility in choosing where to include timber frame components. As shown in the photographs, our clients chose to have timber framing in the great room, kitchen, master bedroom and loft, but you can choose other configurations.

The large fireplace shown in the great room may instead be replaced by a gas fireplace and more windows to enhance the view.



Rear view.

This home was built with a walk-out basement, and a modified prow-front great room with a massive fireplace. The standard plan has a square front with more window space and a smaller fireplace.

Photos show an example home 'as built' and may not correspond to the standard floor plan.
All photos and designs copyright 2005 by Thistlewood Timber Frame Homes.

Great Room



Entrance Foyer & Loft



Master Bedroom





THE TRILLIUM COLLECTION
Thistlewood Timber Frame Homes

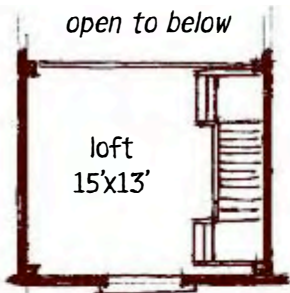
Plan No: SSS-01-2006

Single Story Splendor

2500 sq. ft.



Kitchen with timber ceiling



2nd Fl Loft



Thistlewood
Timber Frame Homes

Main Floor



PRICING:

great room & entry
master bedroom
kitchen & dining room
total timber frame cost \$81,950
in US Dollars FOB our factory, Douglas Fir
(all frame prices are subject to change without notice)

SIPS panels \$37,000
all exterior walls enclosing conditioned space,
plus roof panels over timber-vaulted areas
(all SIPS prices are estimates and must be re-priced for your construction loca-
tion)

GENERAL SPECIFICATIONS:

one story with loft; 2 bedrooms, 2 bathrooms
hybrid with 4-bent main structure, 2-bent bedroom
structure, ceiling beams and posts in kitchen & dining
room, garage connected with breezeway

DIMENSIONS OF HOUSE:

62 ft x 34 ft, 2470 sq ft conditioned space
master bedroom — 14 ft x 18 ft
great room — 18 ft x 25 ft
dining room — 15 ft x 16 ft
kitchen — 16 ft x 16 ft
breakfast nook — 8 ft x 12 ft
2nd floor bedroom — 14 ft x 12 ft
2nd floor loft — 15 ft x 13 ft
(all dimensions rounded off and approximate)

Photos show an example home 'as built' and may not correspond to the standard floor plan.
All photos and designs copyright 2005 by Thistlewood Timber Frame Homes.

Copyright 2005 Thistlewood Timber Frame Homes. All rights reserved. May not be reproduced without permission.

(800) 567-3280

www.thistlewoodtimberframe.com