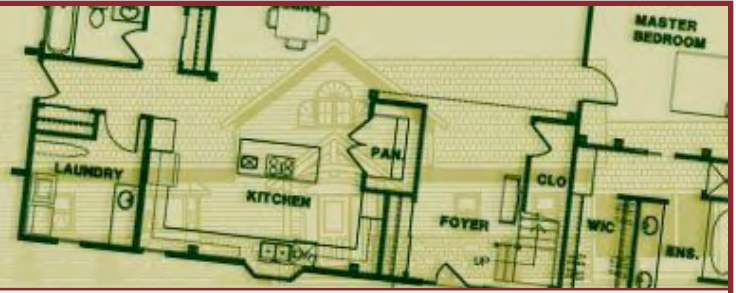




THE TRILLIUM COLLECTION
Thistlewood Timber Frame Homes



Plan Number: WLE-01-2006

Woodland Escape

This country-influenced home boasts character, comfort, light and warmth. There is a friendly atmosphere that welcomes all those that enter to sit down, relax, and enjoy the view.

The floor plan has a number of attractive and functional features suitable for retirement or active family living, such as a main floor master bedroom. Other favorite components of this home include vaulted ceilings, a sunken sunroom or den, a 3-sided gas fireplace and a timber front porch & rear deck. As always, we pay close attention to storage space, and to the bath and kitchen layouts.

Available floor plan variations provide the option of one, two or three bedrooms upstairs, while retaining a dramatic loft open to the great room's vaulted space.



Front view.

The owners chose to use vertical board & batten siding. Ask us about alternative exterior finishes for your home. This particular house was built on a lake, so there is a full walk-out basement to the rear of the house.

Photos show an example home 'as built' and may not correspond to the standard floor plan. All photos and designs copyright 2005 by Thistlewood Timber Frame Homes.

Sunroom



Dining Area & Great Room



Kitchen





Rear view with walkout to lake.

Woodland Escape

2200 to 2600 sq. ft.

PRICING:

timber frame \$108,350
 main frame & exterior timbers
 (3 bdrm version)
 in US Dollars FOB our factory, Douglas Fir
 (all frame prices are subject to change without notice)

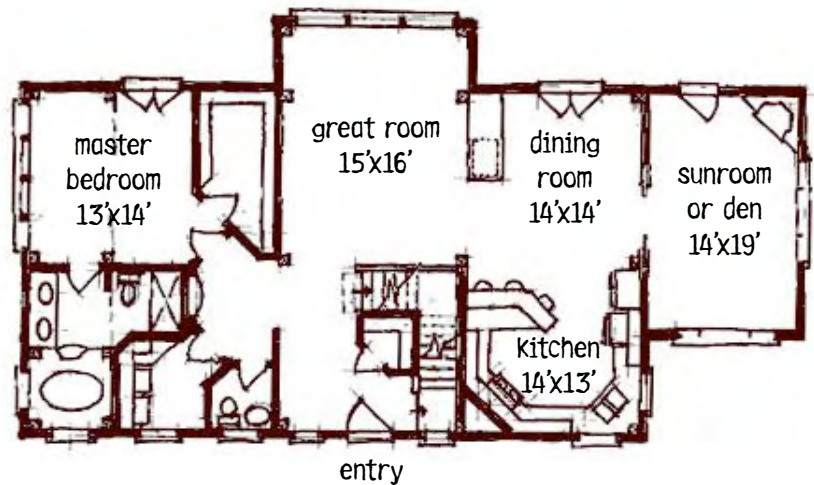
SIPS panels \$53,000
 all exterior walls enclosing conditioned space,
 plus roof panels over timber-vaulted areas
 (all SIPS prices are estimates and must be re-priced for
 your construction location)

GENERAL SPECIFICATIONS:

full-frame design
 two story home
 2, 3 or 4 bedrooms, 2.5 bathrooms
 4-bent main structure
 ceiling beams and posts over sunroom
 separate garage,
 or attached garage with breezeway

DIMENSIONS OF HOUSE:

58 ft x 32.5 ft, 2400 sq ft conditioned space as shown
 master bedroom — 13 ft x 14 ft
 great room — 15 ft x 16 ft
 dining room — 14 ft x 14 ft
 kitchen — 14 ft x 13 ft
 sunroom — 14 ft x 19 ft
 2nd floor bedroom — 13 ft x 14 ft
 2nd floor bedroom — 14 ft x 12 ft
 2nd floor loft — 18 ft x 13 ft
 (all dimensions rounded off and approximate)

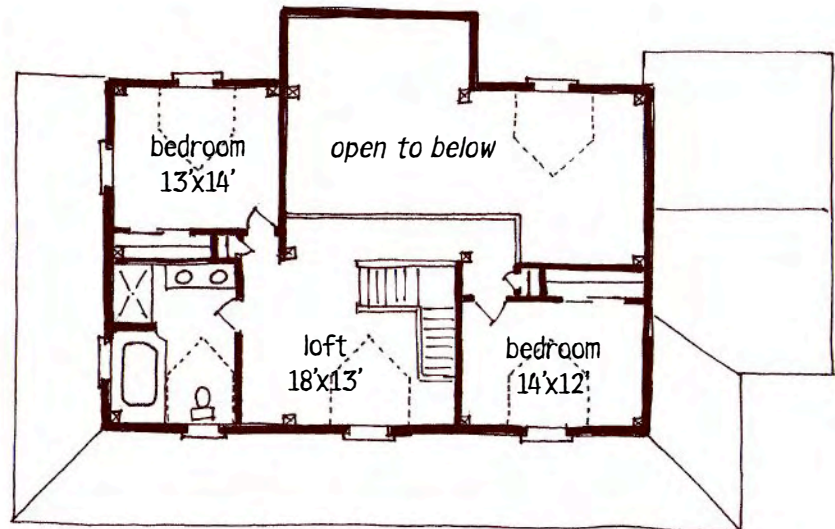


Main Floor

Second Floor



3 bedroom plan shown, optional 2- and 4- bedroom layouts available



Photos show an example home 'as built' and may not correspond to the standard floor plan. All photos and designs copyright 2005 by Thistlewood Timber Frame Homes.

Copyright 2005 Thistlewood Timber Frame Homes. All rights reserved. May not be reproduced without permission.

(800) 567-3280

www.thistlewoodtimberframe.com